



IGNITION
PARTS

PRODUCT NEWS

// *Technical Newsletter*



PNT-2019-003 FAKE CR9EIX SPARK PLUGS
DATE: 07.02.2019

TECHNICAL NEWSLETTER

// WARNING: FAKE CR9EIX SPARK PLUGS IN CIRCULATION

NGK SPARK PLUG's Technical Service centre recently became aware of fake CR9EIX spark plugs being sold on the internet. These plugs caused damage to customer engines due to melted centre electrodes. Follow the instructions below to distinguish between original and fake products.



Examples of melted centre electrodes on fake CR9EIX spark plugs.



WHAT'S THE DIFFERENCE BETWEEN THE ORIGINAL AND A FAKE PRODUCT?

- Original NGK CR9EIX spark plugs have a centre electrode with an iridium tip. This material has a very high melting point and is extremely hard and long lasting.
- The fake plugs feature a standard Nickel electrode that has been tapered down with a lathe, giving it the same appearance as the iridium tip. This fake part is very weak and cannot withstand the same heat as iridium. This soft spot causes the centre electrode to melt, inflicting damage to the engine.

WHAT TO DO IF IN DOUBT?

Refer to the following images and compare each one thoroughly with the suspect product if in doubt.

1. THE BRANDING

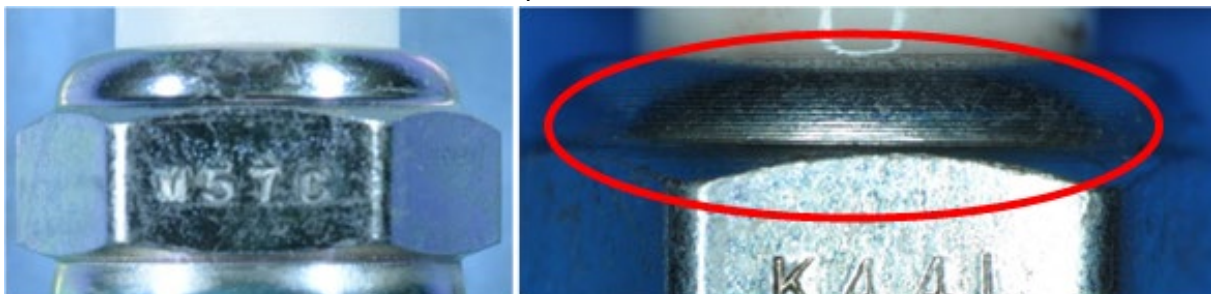
Have a look at the product name on the spark plug. If the font type is different from the one shown in the photo on the left and if the font is smudged in some way, the product might be a counterfeit.



Left image: Original product. All other images show counterfeits.

2. THE CRIMPING PORTION

Take a close look at the crimping portion of the plug. If you can see a machine cutting mark on it, be alert: this is indicative of a fake product.



Left image: Original product. Right: Counterfeit product with machine mark on crimping portion.

3. THE HEXAGON

Next, check the hexagon. If there is no Lot Number and/or a different font type is used compared to the one shown below left, it's not an original product.



Left image: Original product with Lot Number and correct font. Both images on the right: Counterfeit products.

4. THE C-GROOVE PORTION

Then look at the C-Groove portion of the spark plug. If you can see a machine cutting mark on the surface of the metal shell, again, this is a sign of a counterfeit.



Left image: Original product without machine mark. Right: Machine mark from cutting on the surface of the metal shell on the C-Groove portion (counterfeit).

5. THE ELECTRODES

Lastly, take a close look at the shape of the electrode. If yours differs from the left-hand picture, be warned.



Left image: Electrode on an original product. Right: Electrode of a fake product.

WHAT TO DO WHEN YOU SPOT A FAKE PRODUCT?

There are even more characteristics which point towards fake parts. If still in doubt, please contact our Technical Service team.